



FROM PROMISE TO PRODUCT

# 2-SHOT CO-INJECTION

## GEARS:



TWO MATERIALS  
NO WELD LINES  
BUSHINGS IN BORE  
DRIVE FEATURES  
DAMPED/ISOLATION

## COSMETIC:

SOFT TOUCH  
MULTI COLOR



## DRIVE SYSTEMS:



FRICITION PICKERS  
FRICITION ROLLERS  
COUPLINGS



TWO MATERIAL  
CLUTCHES  
BELTS

## TOOLING:

Q-DRIVE INSERTS  
DEDICATED



Seitz LLC  
212 Industrial Lane  
Torrington, CT 06790

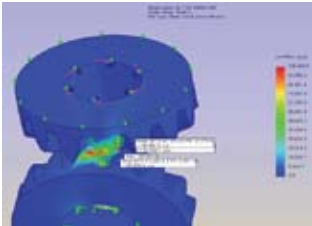
Contact the Seitz Sales Team @  
1-800-243-5115

Visit us @  
[www.seitzllc.com](http://www.seitzllc.com)

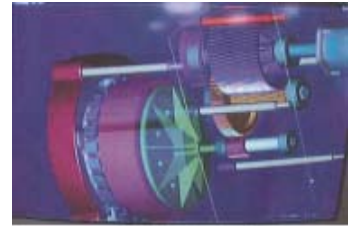


Seitz LLC  
 212 Industrial Lane  
 Torrington, CT 06790  
 (860) 489-0476  
 www.seitzllc.com

Seitz is a solutions provider and has been manufacturing injection molded drivetrain components and assembled systems for over 60 years. We are known throughout the marketplace for our gear design expertise, quick tooling capability, quality molded products, manufactured sub-assemblies and assemblies. We'd like to highlight some of the capabilities that we can provide to support your development programs with timely design and engineered solutions. At every step of the process, from gear and drivetrain system development through prototype launch and on to production, our quick tooling and plastic molding competencies will provide you with a proper solution that meets the demands of your most challenging application requirements.



**Design and Development** – From simple Gear pairs to complex GearTrain systems, we can assist in development of your motion control device. Tooth profiles are designed specifically for the application, resulting in optimized gear performance for function and reliability.



**Tooling** – Our Q-Drive™ and Q-Mold™ insert tooling is produced from S-7 Hardened Steel. Lead times of 2-4 weeks are typical. This provides a production ready tooling in prototype lead times. Additionally, we produce a wide variety of dedicated molds for products produced in our molding machines which range from 17 -770 Tons, including overmold, 2-Shot co-injection, unscrew and vertical shuttle press capabilities.



**Injection Molded Gears & Components** – Seitz provides significant value added benefit through our molding expertise. Molding of gears of all design types including miniature sizes, miscellaneous components up through large chassis and clear cosmetic parts, insert molding, overmolding, two-shot molding and secondary operations are all commonplace in our 88,000 Sq Ft Connecticut facility and in our 55,000 Sq Ft Changzhou China facility.



**Assembled Products** – With our drivetrain at the core, Seitz has developed and produces products such as actuators, gear motors and gear pumps. We also assemble many other products for the broad markets we serve.



Please consider **Seitz LLC** to provide assistance with your newest molded component and assembly development challenges. We look forward to developing a partnership with you, adding your project to the list of our many success stories.

Contact the **Seitz Sales Team** @ (860)-489-0476  
 Mike Beaman – VP Sales and Marketing  
 Karl Seitz – VP Application Solutions  
 Brian Jones – VP Business Development  
 Paul Cornish – Sales Engineer  
 Tony Finello – Sales Engineer  
 Lorie Ann Nicholson – Customer Service

ext 164 mike.beaman@seitzcorp.com  
 ext 112 karl.seitz@seitzcorp.com  
 ext 110 brian.jones@seitzcorp.com  
 ext 115 paul.cornish@seitzcorp.com  
 ext 158 tony.finello@seitzcorp.com  
 ext 166 lorieann.nicholson@seitzcorp.com